

EPDM virgin granules vulcanised with sulphur, produced in Poland.

STANDARD GRAIN SIZE

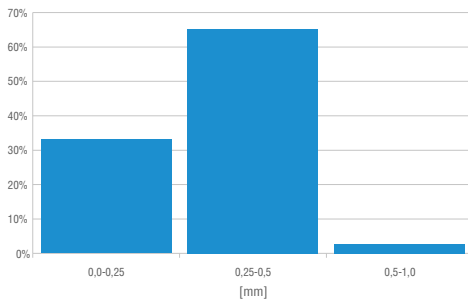
0,0 - 0,5 mm

0,5 - 1,5 mm

1,0 - 3,5 mm

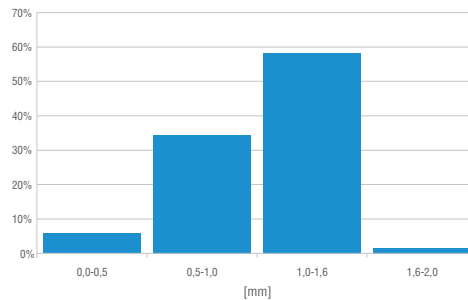
other on request

SIEVE ANALYSIS 0,0 - 0,5 mm



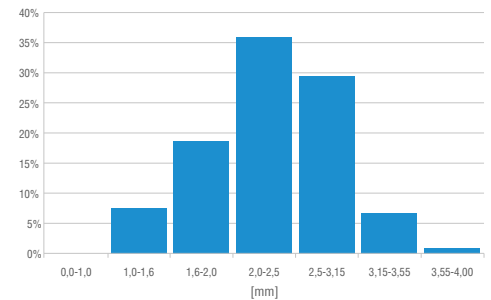
Test according to standard PN-EN 933-1:2012

SIEVE ANALYSIS 0,5 - 1,5 mm



Average values

SIEVE ANALYSIS 1,0 - 3,5 mm



TECHNICAL DATA SHEET

Property	Value/Tolerance	Unit	Test method
Density	1,58 +/- 0,03	[g/cm ³]	PN-EN ISO 1183-1:2019
Hardness	65 +/- 5	[°Sh A]	PN-EN 868:2005
Tensile strength	> 5	[MPa]	PN-ISO 37:2007
Elongation at break	> 500	[%]	PN-ISO 37:2007
Bulk density	0,0 - 0,5 mm approx. 450	[g/l]	PN-EN ISO 1097-3:2000
	0,5 - 1,5 mm approx. 550		
	1,0 - 3,5 mm approx. 670		
Polymer content	> 24	[%]	
Base polymer	EPDM – ethylene propylene diene monomer rubber		

Content: EPDM - Etylen Propylen Dien Monomer, mineral fillers, plasticizer, vulcanising agents, additives, pigments.

Flammability class version standard:	C _{fl} -S1	standard: PN-EN 13501-1+A1:2010
Flammability class version indoor:	B _{fl} -S1	standard: PN-EN 13501-1+A1:2010

ENVIRONMENTAL PARAMETERS

Standard	Result
DIN EN 71-3:2013-05 Migration of certain elements	Fulfills requirements
AfPS GS 2014:01, PAH Category 1	Fulfills requirements
DIN 18035-6, DOC, EOX, heavy metals, other	Fulfills requirements

STANDARD COLOURS (number = approximate RAL)



Sand yellow 1002



Yellow 1012



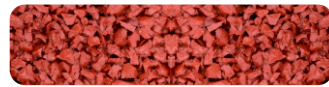
Ivory 1014



Light ivory 1015



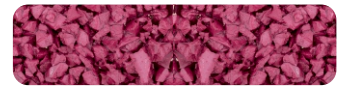
Orange 2008



Red 3016



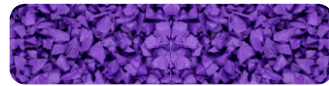
Rose 3017



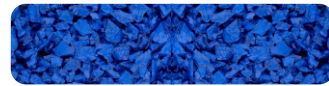
Red violet 4002



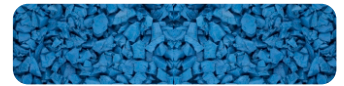
Heather violet 4003



Blue lilac 4005



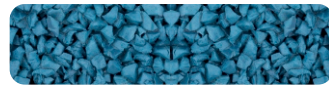
Gentian blue 5010



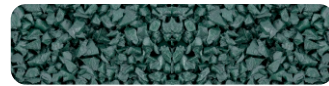
Light blue 5012



Sky blue 5015



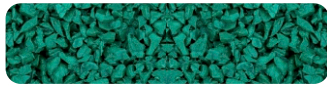
Turquoise blue 5018



Moss green 6005



Reseda green 6011



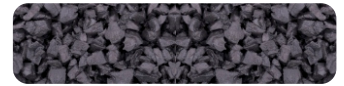
Turquoise green 6016



May green 6017



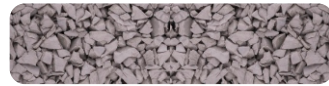
Pale green 6021



Iron gray 7011



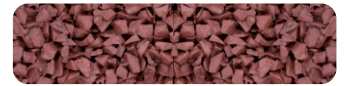
Dusty grey 7037



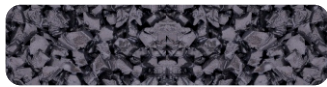
Agate grey 7038



Beige brown 8024



Pale brown 8025



Black 9004



Pure white 9010

The data presented in the technical data sheet indicate average product parameters. Deviations from the stated values are possible. The final decision on the use of the granules belongs to the surface contractor, who is obliged to check the quality and suitability of the product for the given application before installation. We reserve the right to make changes to the product.

Pictures presented show granules with an aliphatic binder. The actual colour of the surface may differ from the photo, which is due to the lighting used and the monitor settings. The colour of the loose granules is different from presented photos.

In order to avoid damage of the surface, it is recommended to regularly clean the surface: remove dirt, wash the surface, with particular caution when using pressure washers. It is forbidden to use oils, strong chemicals, solvents, bleaches, gasoline, diesel oil, lubricants.

In order to extend the lifespan of the surface, it is recommended to protect the surface from the sun rays and use a top coat sealer to rejuvenate your surface every two to three years.

Last update 01/2022

STARGUM Stankiewicz Sp. j.

ul. Ciepna 7

73-110 Stargard, Poland

tel.: +48 91 578 80 08

sales@stargum.pl

www.stargum.pl

District Court Szczecin-Centrum in Szczecin, XIII Commercial Division of the National Court Register
NIP / Tax ID: PL8542434414 | REGON: 388669886 | KRS: 0000918934 | Share capital: 5 000 000 PLN